

Violin I

# For Chick

for Dave Rivello and the Eastman Studio Orchestra

Composed by George Darrah

♩ = 100

2

*f*

6

*ff*

## Suddenly Faster

♩ = 110

10

*mp*

14 rit. . . . . //

*f* *mp*

## Fast Samba- 1/2 time feel

4x's

18 18 ♩ = 118

*18*



76

*mf* *ff*

80 80

*mf* *f*

84

*mf* *f*

88

*mf* *ff*

92

4

*f* *ff*

99

5

104

Piano Solo

14

*f* *ff*

118 120

*mp*

This staff contains measures 118, 119, and 120. Measure 118 begins with a whole rest, followed by a half note G4, a quarter note A4 with a sharp sign, and a quarter note B4. A slur covers these three notes. Measure 119 contains a half note C5, a quarter note B4, and a quarter note A4. Measure 120 contains a half note G4, a quarter note F4, and a quarter note E4. A dynamic marking of *mp* is placed below the first measure.

122

This staff contains measures 122, 123, and 124. Measure 122 begins with a whole rest, followed by a half note G4, a quarter note A4, and a quarter note B4. A slur covers these three notes. Measure 123 contains a half note C5, a quarter note B4, and a quarter note A4. Measure 124 contains a half note G4, a quarter note F4, and a quarter note E4.

126

This staff contains measures 126, 127, and 128. Measure 126 begins with a whole rest, followed by a half note G4, a quarter note A4, and a quarter note B4. A slur covers these three notes. Measure 127 contains a half note C5, a quarter note B4, and a quarter note A4. Measure 128 contains a half note G4, a quarter note F4, and a quarter note E4.

130

This staff contains measures 130, 131, and 132. Measure 130 begins with a whole rest, followed by a half note G4, a quarter note A4, and a quarter note B4. A slur covers these three notes. Measure 131 contains a half note C5, a quarter note B4, and a quarter note A4. Measure 132 contains a half note G4, a quarter note F4, and a quarter note E4.

134

This staff contains measures 134, 135, 136, 137, and 138. Measure 134 begins with a whole rest, followed by a half note G4 with a flat sign, a quarter note A4, and a quarter note B4. A slur covers these three notes. Measure 135 contains a half note C5, a quarter note B4, and a quarter note A4. Measure 136 contains a half note G4, a quarter note F4, and a quarter note E4. Measure 137 contains a half note G4, a quarter note A4, and a quarter note B4. Measure 138 contains a half note C5, a quarter note B4, and a quarter note A4.

138

This staff contains measures 138, 139, 140, 141, and 142. Measure 138 begins with a whole rest, followed by a half note G4 with a flat sign, a quarter note A4, and a quarter note B4. A slur covers these three notes. Measure 139 contains a half note C5, a quarter note B4, and a quarter note A4. Measure 140 contains a half note G4, a quarter note F4, and a quarter note E4. Measure 141 contains a half note G4, a quarter note A4, and a quarter note B4. Measure 142 contains a half note C5, a quarter note B4, and a quarter note A4.

142

This staff contains measures 142, 143, 144, 145, and 146. Measure 142 begins with a whole rest, followed by a half note G4 with a flat sign, a quarter note A4, and a quarter note B4. A slur covers these three notes. Measure 143 contains a half note C5, a quarter note B4, and a quarter note A4. Measure 144 contains a half note G4, a quarter note F4, and a quarter note E4. Measure 145 contains a half note G4, a quarter note A4, and a quarter note B4. Measure 146 contains a half note C5, a quarter note B4, and a quarter note A4.

146

This staff contains measures 146, 147, 148, 149, and 150. Measure 146 begins with a whole rest, followed by a half note G4 with a flat sign, a quarter note A4, and a quarter note B4. A slur covers these three notes. Measure 147 contains a half note C5, a quarter note B4, and a quarter note A4. Measure 148 contains a half note G4, a quarter note F4, and a quarter note E4. Measure 149 contains a half note G4, a quarter note A4, and a quarter note B4. Measure 150 contains a half note C5, a quarter note B4, and a quarter note A4.

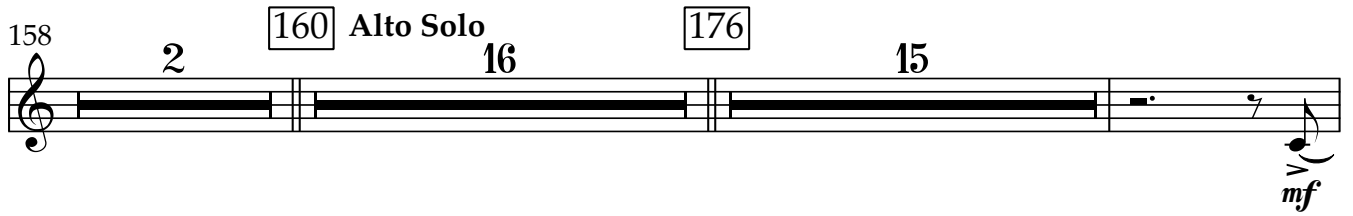
150

This staff contains measures 150, 151, 152, 153, and 154. Measure 150 begins with a whole rest, followed by a half note G4 with a flat sign, a quarter note A4, and a quarter note B4. A slur covers these three notes. Measure 151 contains a half note C5, a quarter note B4, and a quarter note A4. Measure 152 contains a half note G4, a quarter note F4, and a quarter note E4. Measure 153 contains a half note G4, a quarter note A4, and a quarter note B4. Measure 154 contains a half note C5, a quarter note B4, and a quarter note A4.

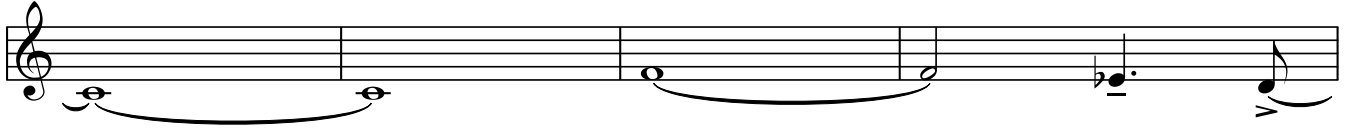
154



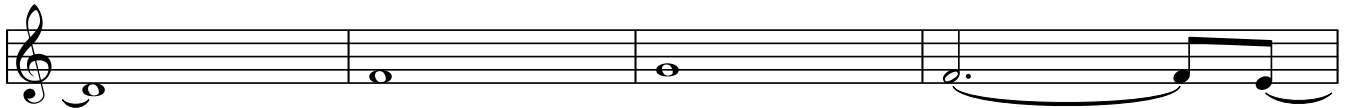
158



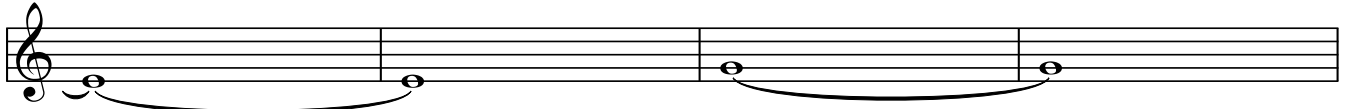
192



196



200



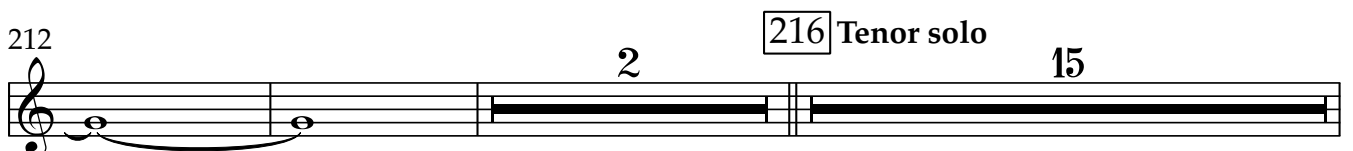
204



208



212



231

*p*

235

*mp*

239

*mf*

243

*f*

247

*f*

251

*f*

255

*f*

259

*ff*

div. unis.

264

*mf*

268

*mf*

272

276

280

284

*ff*

288 Drum Solo 8

296

*f*

299

303

310

313 *f*

318

322

326 *ff* *f* 328

330

334

338

342



346  $\wedge$   
*ff* 5

352 [352] *f*

356

360 7 *mf* *f* 3 3

370  $\wedge$  *ff* 3

Tempo Rubato  
♩ = 118 //

374  $\wedge$  *fp*

A Tempo  
♩ = 118

377 *f* *ff*  $\wedge$