

DOUBLE BASS

FULL CIRCLE

DAVE RIVELLO

♩ = 72

2 A TEMPO

8

12 **15**

18 ♩ = ♩ (♩ = 144 - ST. ♩) **8**

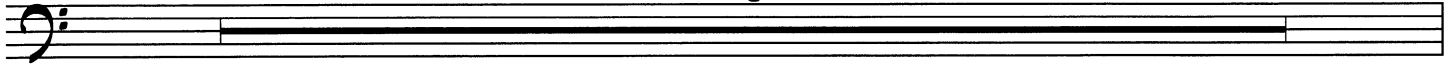
26 **8**

35 **8**

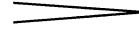
RETURN to the ENSEMBLE LIBRARY
Eastman School of Music

43

6



f



54

2



f

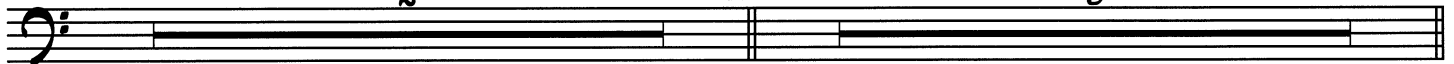
61



66

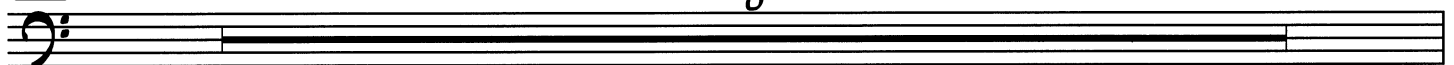
2

8



74

8

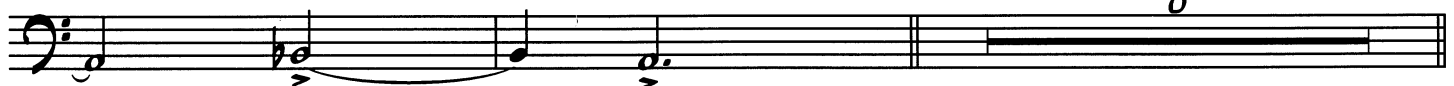


mf

f

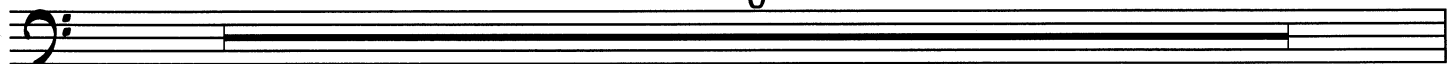
88

8



96

6



Musical staff with notes and dynamics. It starts with a bass clef and a key signature of one flat. The notes are: G2, A2, Bb2, C3, D3, E3, F3, G3, A3, Bb3, C4, D4, E4, F4, G4, A4, Bb4, C5. There is a forte (f) dynamic marking at the beginning and a hairpin crescendo leading to a fortissimo (ff) dynamic marking at the end.

107

Musical staff with a double bar line and notes. It starts with a bass clef and a key signature of one flat. The notes are: G2, A2, Bb2, C3, D3, E3, F3, G3, A3, Bb3, C4, D4, E4, F4, G4, A4, Bb4, C5. There is a forte (f) dynamic marking at the beginning and a hairpin crescendo leading to a fortissimo (ff) dynamic marking at the end.

Musical staff with notes and dynamics. It starts with a bass clef and a key signature of one flat. The notes are: G2, A2, Bb2, C3, D3, E3, F3, G3, A3, Bb3, C4, D4, E4, F4, G4, A4, Bb4, C5. There is a forte (f) dynamic marking at the beginning and a hairpin crescendo leading to a fortissimo (ff) dynamic marking at the end.

114

Musical staff with notes and dynamics. It starts with a bass clef and a key signature of one flat. The notes are: G2, A2, Bb2, C3, D3, E3, F3, G3, A3, Bb3, C4, D4, E4, F4, G4, A4, Bb4, C5. There is a forte (f) dynamic marking at the beginning and a hairpin crescendo leading to a fortissimo (ff) dynamic marking at the end. The word "SUB." is written below the staff.

Musical staff with notes and dynamics. It starts with a bass clef and a key signature of one flat. The notes are: G2, A2, Bb2, C3, D3, E3, F3, G3, A3, Bb3, C4, D4, E4, F4, G4, A4, Bb4, C5. There is a forte (f) dynamic marking at the beginning and a hairpin crescendo leading to a fortissimo (ff) dynamic marking at the end.

130

Musical staff with a double bar line and notes. It starts with a bass clef and a key signature of one flat. The notes are: G2, A2, Bb2, C3, D3, E3, F3, G3, A3, Bb3, C4, D4, E4, F4, G4, A4, Bb4, C5. There is a forte (f) dynamic marking at the beginning and a hairpin crescendo leading to a fortissimo (ff) dynamic marking at the end.

start factory

141 (BKG'S 2ND TIME ONLY)

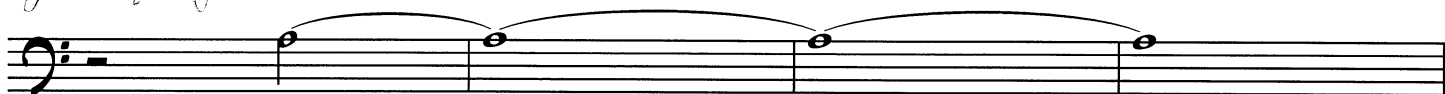
157

Musical staff with a double bar line and notes. It starts with a bass clef and a key signature of one flat. The notes are: G2, A2, Bb2, C3, D3, E3, F3, G3, A3, Bb3, C4, D4, E4, F4, G4, A4, Bb4, C5. There is a forte (f) dynamic marking at the beginning and a hairpin crescendo leading to a fortissimo (ff) dynamic marking at the end.

*add the
2nd line
ohh*

FULL CIRCLE

DOUBLE BASS

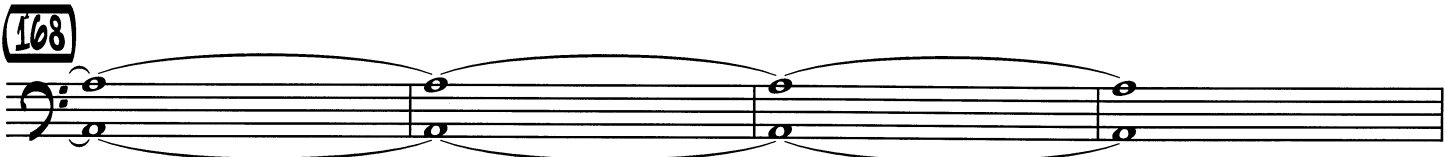


mp

Cresc.

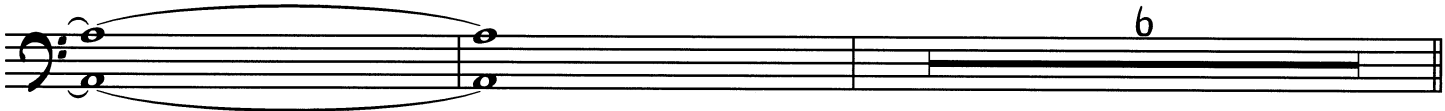
2ND TIME ONLY

DIV.

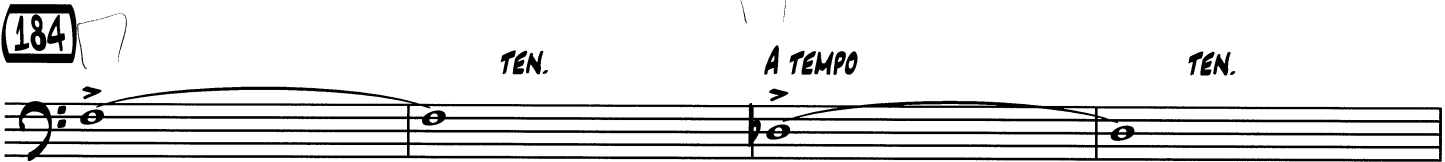


168

174



b



184

TEN.

A TEMPO

TEN.



ff

A TEMPO

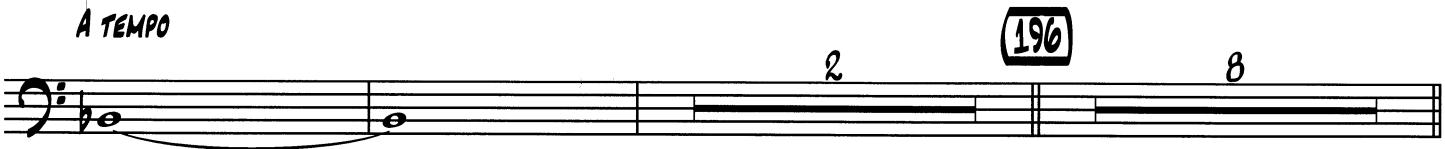
TEN.

A TEMPO

TEN.



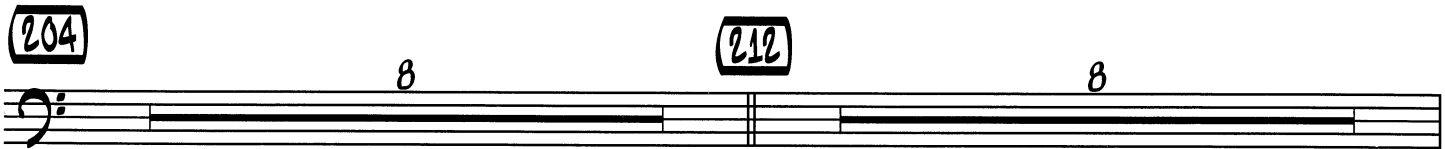
A TEMPO



196

2

8



204

8

212

8

FULL CIRCLE

DOUBLE BASS 5

First staff of music in bass clef. It begins with a dynamic marking of **f**. The melody consists of a dotted quarter note, followed by an eighth note, a quarter note, and a half note, all beamed together. A fermata is placed over the half note. The staff continues with a whole rest for two measures, followed by a double bar line and a fermata over a whole note.

Second staff of music in bass clef. It begins with a dynamic marking of **f**. The melody consists of a dotted quarter note, followed by an eighth note, a quarter note, and a half note, all beamed together. A fermata is placed over the half note. The staff continues with a whole rest for two measures, followed by a double bar line and a fermata over a whole note. A circled number **227** is written above the second measure of the whole rest.

Third staff of music in bass clef. It begins with a dynamic marking of **f**. The melody consists of a dotted quarter note, followed by an eighth note, a quarter note, and a half note, all beamed together. A fermata is placed over the half note. The staff continues with a whole rest for two measures, followed by a double bar line and a fermata over a whole note.

Fourth staff of music in bass clef. It begins with a dynamic marking of **f**. The melody consists of a dotted quarter note, followed by an eighth note, a quarter note, and a half note, all beamed together. A fermata is placed over the half note. The staff continues with a whole rest for two measures, followed by a double bar line and a fermata over a whole note. A circled number **227** is written above the second measure of the whole rest. The word **DIV.** is written above the final measure, and a dynamic marking of **ff** is written below the staff.