

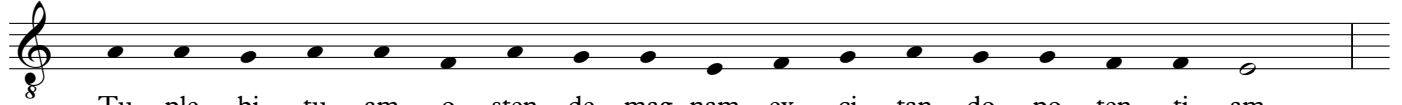
Qui regis sceptr

1a



Qui re - gis scep - tra for - ti dex - tra so - lus cunc - ta

1b



Tu ple - bi tu - am o - sten - de mag - nam ex - ci - tan - do po - ten - ti - am

2a



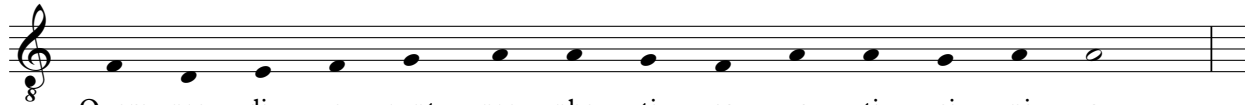
Pre - sta do - na il - li sa - lu - ta - ri - a

2N



(Ah)

3a



Quem pre - dix - e - runt pro - phe - ti - ca va - ti - ci - ni - a

3N



(Ah)

4a



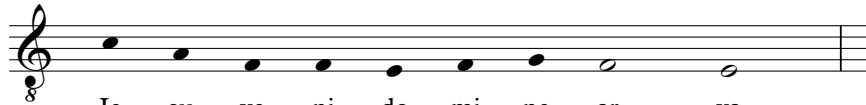
O cla - ra po - li re - gi - a in nos - tra

4N



(Ah)

5a



Ie - su ve - ni do - mi - ne ar - va

5N



(Ah)