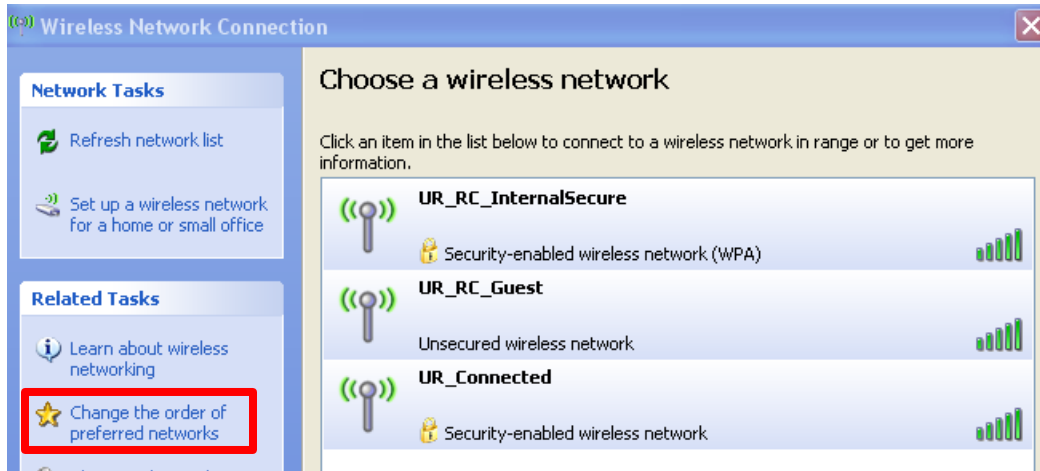


## How to connect to UR\_Connected from Windows XP

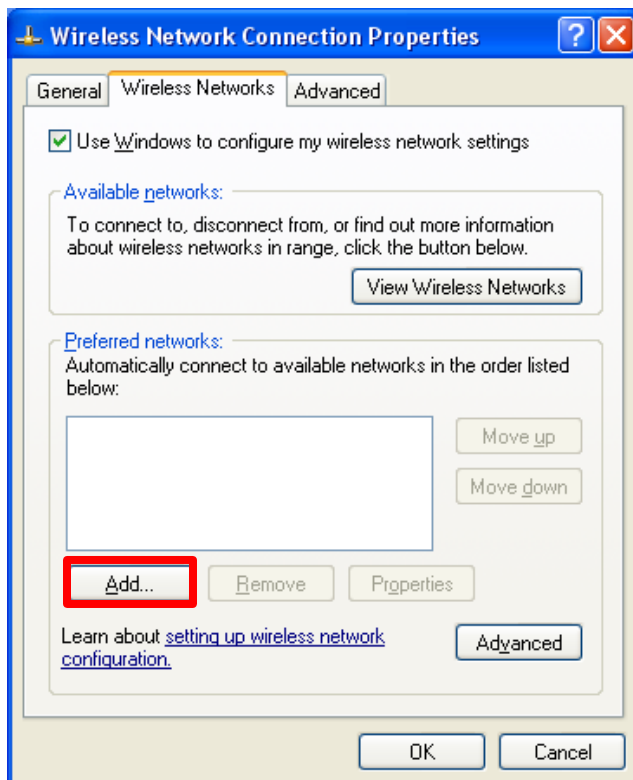
Click the Windows XP wireless manager icon in the system tray.



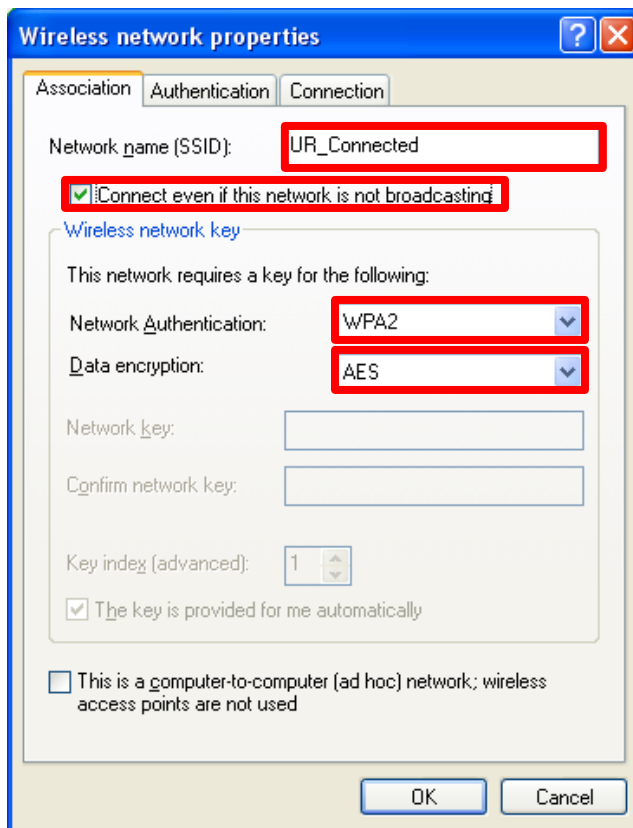
In the Wireless Network Connection window that appears, click on **Change the order of preferred networks**. Do not select UR\_Connected as the connection will fail.



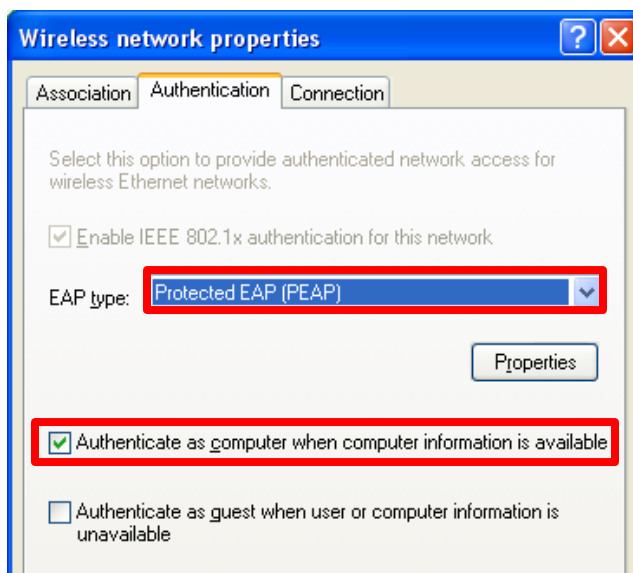
On the Wireless Network Connection Properties windows, click on **Add**.



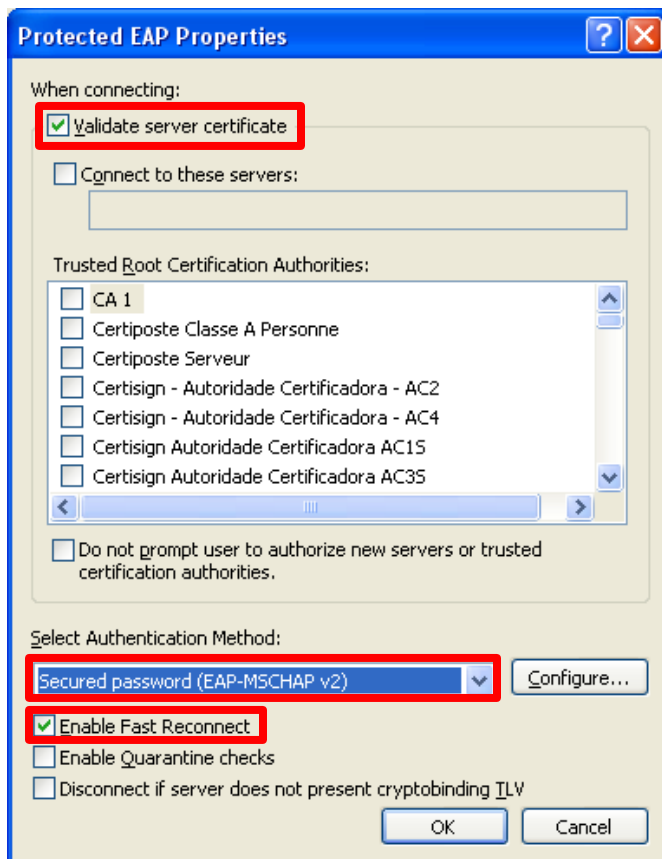
On the Association tab of the Wireless network properties window, enter **UR\_Connected** as the Network Name, ensure that **Connect even if this network is not broadcasting** is enabled, set Network Authentication to **WPA2**, and Data encryption is set to **AES**.



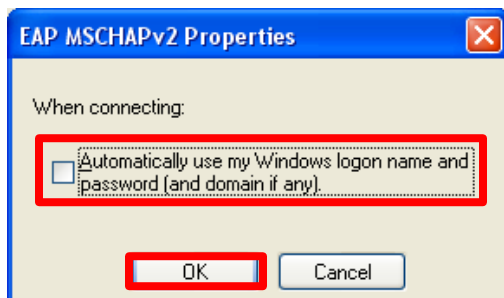
Click on the Authentication tab and ensure that EAP type is set to **Protected EAP (PEAP)** and **Authenticate as computer when computer information is available** is enabled. Then click **Properties**.



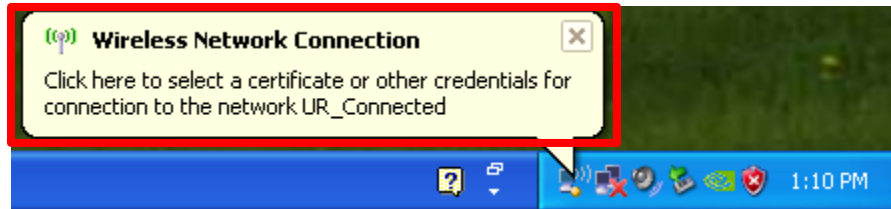
On the Protected EAP Properties window, ensure that **Validate server certificate** is enabled, Select Authentication Method is set to **Secured password (EAP-MSCHAP v2)**, and **Enable Fast Reconnect** is enabled. Click on **Configure**.



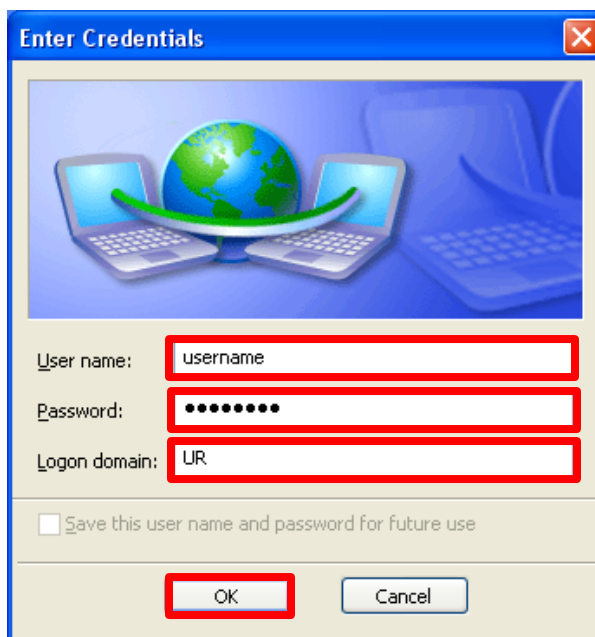
On the EAP MSCHAPv2 Properties window, uncheck **Automatically use my Windows logon name and password (and domain if any)** if your Windows XP computer is not on the UR domain (most likely the case if your computer is personally owned and not property of the University of Rochester or Eastman School of Music). Click on the **OK** button.



Close the **OK** button for all remaining windows related to wireless networking. A popup window will now appear in the bottom right corner of your Windows XP computer.



Click on the Wireless Network Connection notification to make the Enter Credentials window appear. Enter your Active Directory account username as the User name, your Active Directory password as the password, and UR as the Logon domain and click **OK**.



A Validate Server Certificate window will appear. Click **OK**.

