

Cello

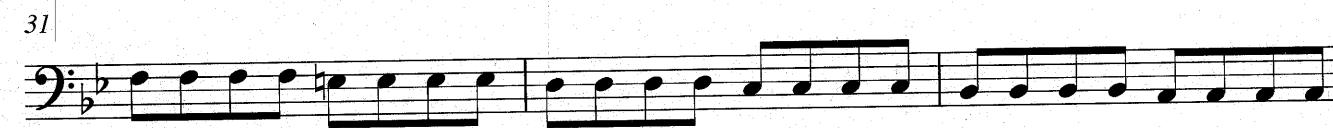
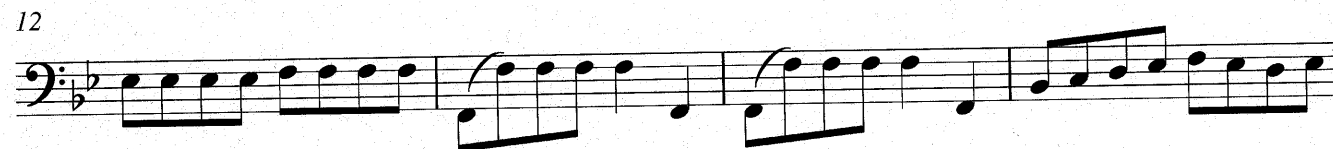
# Arrival of the Queen of Sheba

for string trio

arrangement by  
André van Haren

G. F. Händel (1685-1759)

**Allegro moderato**



# 1. MARCH from *Flavius*

George Frederick Handel

**Allegro**

5 *f* *V*

11 *ff* *V* *mf*

17 *ff* *V* *mf*

22 *f* *V*

27 *p*

33 *mf* *f*

39 *ff* *V* *p*

45 *cresc.*

51 *poco rit.* *ff*