

## ECMS Music Theory Placement Exam

Name: \_\_\_\_\_

School grade: \_\_\_\_\_

Email: \_\_\_\_\_

Telephone: \_\_\_\_\_

Applied Instrument: \_\_\_\_\_

Teacher: \_\_\_\_\_

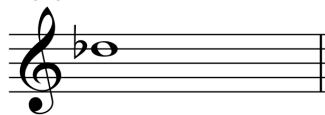
### I. Enharmonic Tones, Semitones and Whole Tones

1. Beside each of the given notes, write an enharmonic tone.

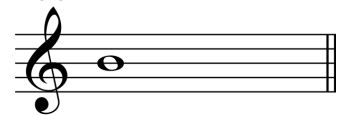
(a) sample



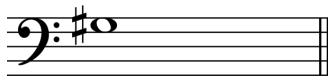
(b)



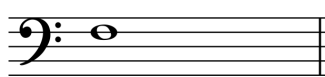
(c)



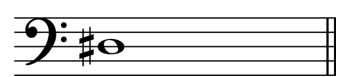
(d)



(e)



(f)



2. Write the requested semitone (ST) or whole tone (WT) above or below each of the given notes.

(a) sample



ST above

(b)



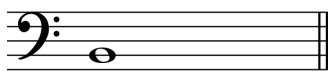
ST above

(c)



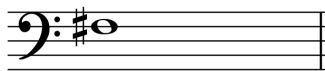
WT above

(d)



ST below

(e)



WT below

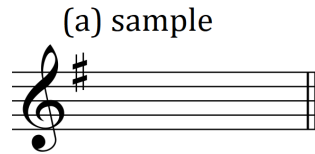
(f)



ST above

## II. Key Signatures and Scales

1. For each of the given key signatures, name the major and relative minor key.



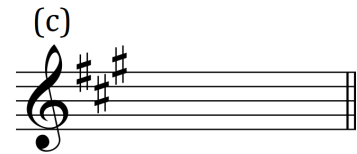
Major: \_\_\_\_\_

Rel Minor \_\_\_\_\_



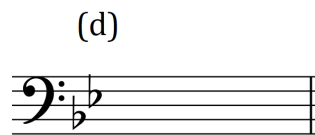
Major: \_\_\_\_\_

Rel Minor \_\_\_\_\_



Major: \_\_\_\_\_

Rel Minor \_\_\_\_\_



Major: \_\_\_\_\_

Rel Minor \_\_\_\_\_



Major: \_\_\_\_\_

Rel Minor \_\_\_\_\_

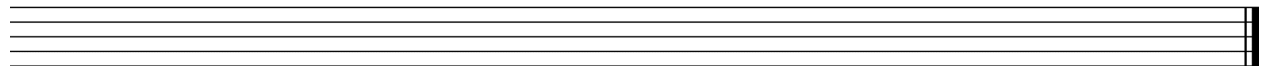


Major: \_\_\_\_\_

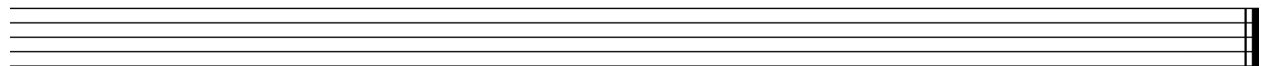
Rel Minor \_\_\_\_\_

2. Write each of the requested scales in the clefs provided, one octave ascending and descending. Use whole notes only. Provide the proper key signature and use accidentals where necessary.

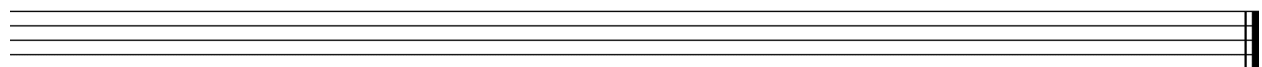
(a) Ab Major in treble clef



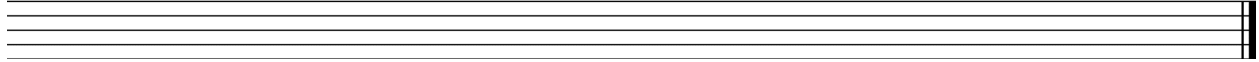
(b) D Minor – harmonic form in bass clef



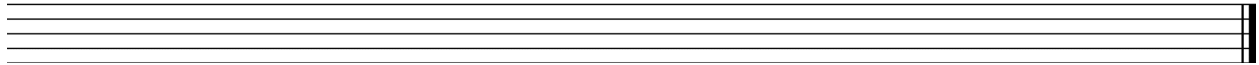
(c) G# Minor – melodic form in treble clef



(d) A Lydian

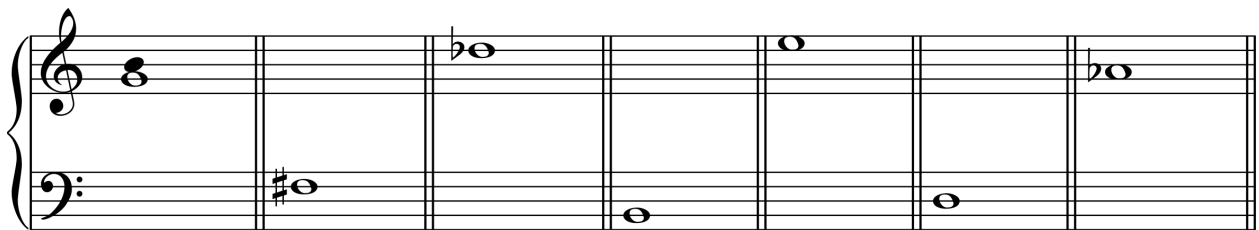


(e) Bb Aeolian



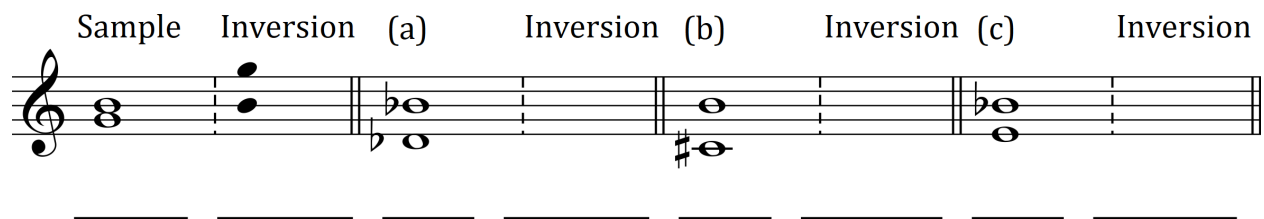
### III. Intervals

1. Write the requested interval above or below the given notes.



M3 above      m2 below      P4 below      m6 above      M7 below      A5 above      d7 above


2. (a) Name each of the given intervals.  
(b) Invert each interval and identify the inversion



## IV. Rhythm and Transposition


1. Add the correct time signature and name the type of meter it represents.

Sample




Meter: Simple Duple

(a)



\_\_\_\_\_

(b)




\_\_\_\_\_

(c)




\_\_\_\_\_

(d)



\_\_\_\_\_

(e)

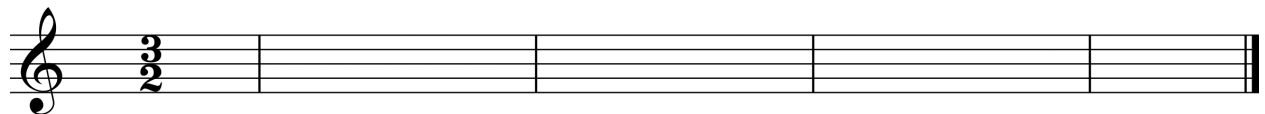


\_\_\_\_\_

2. For the given melody:

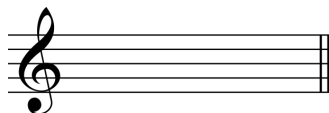
(a) Name the major or minor key

(b) Transpose it up a perfect fifth into the treble clef. Change the meter from 3/4 to 3/2

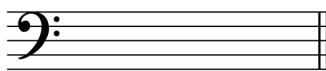


## V. Triads, Four-note Chords and Figured Bass

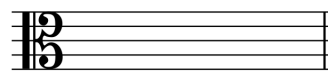
1. Write the chords requested



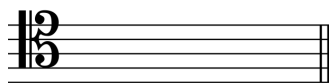
D-flat major



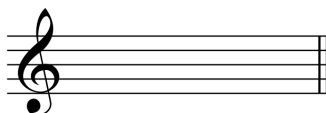
C-sharp minor



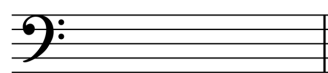
E-flat diminished



A augmented



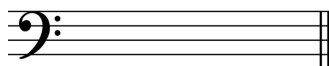
F-sharp major



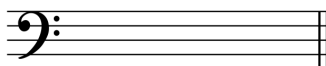
A-flat minor

2. Write the requested triad in root position, first inversion and second inversion.

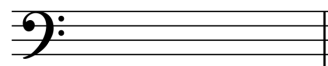
D major



E-flat minor

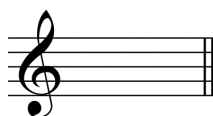


F-sharp major

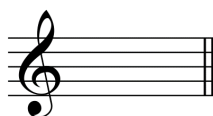


3. Write the requested seventh chords

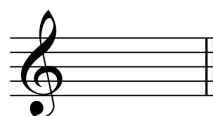
G 6/5



D dim7



C minor 4/3



E-flat 4/2



4. Complete this figured bass by providing a roman numeral analysis, then add a soprano, alto and tenor line.

The image shows a musical score for a figured bass exercise. It consists of two staves: a treble clef staff and a bass clef staff. The key signature is D major (two sharps) and the time signature is 4/4. The bass line contains five measures of music with the following figured bass notation: 6/5, 4/3, 6, 6/4, and 5/3. The treble clef staff is empty, indicating that the student is to complete it by adding a soprano, alto, and tenor line.

5. A chorale phrase appears below. Answer the questions and follow the directions.

- What is the key of the excerpt? \_\_\_\_\_
- Provide a harmonic analysis using Roman Numerals.
- What kind of cadence closes this excerpt? \_\_\_\_\_
- How do you account for the F4 on the third beat of the first measure?  
\_\_\_\_\_
- Circle and label all of the passing tones and neighbor tones.

The image shows a musical score for a chorale phrase. It consists of two staves: a treble clef staff and a bass clef staff. The key signature is B-flat major (two flats) and the time signature is common time (C). The music consists of three measures. The treble clef staff contains a soprano line with a melodic line and a chordal accompaniment. The bass clef staff contains a bass line with a rhythmic accompaniment. The piece ends with a double bar line.

Answer the following questions:

1. Have you taken other music theory classes? \_\_\_\_\_

2. If so, list the class name, school and when you attended.

---

---

---

---

3. Are you currently enrolled in the ECMS Diploma Program? \_\_\_\_\_